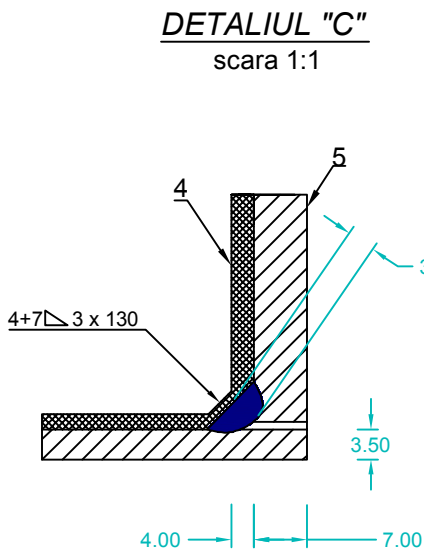
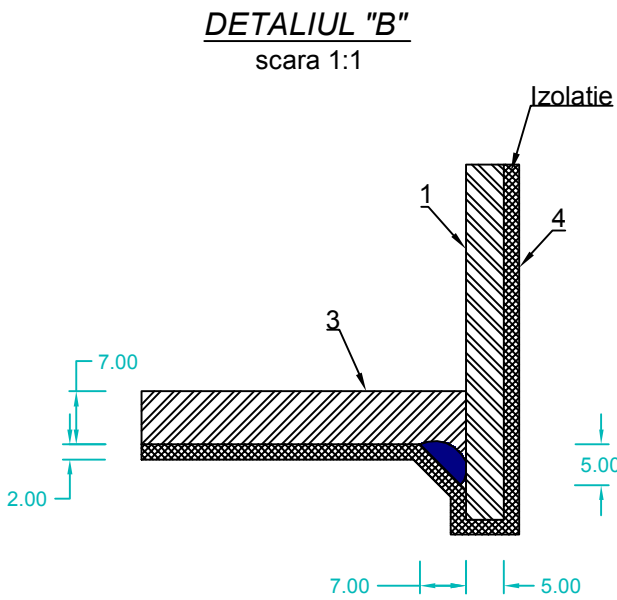
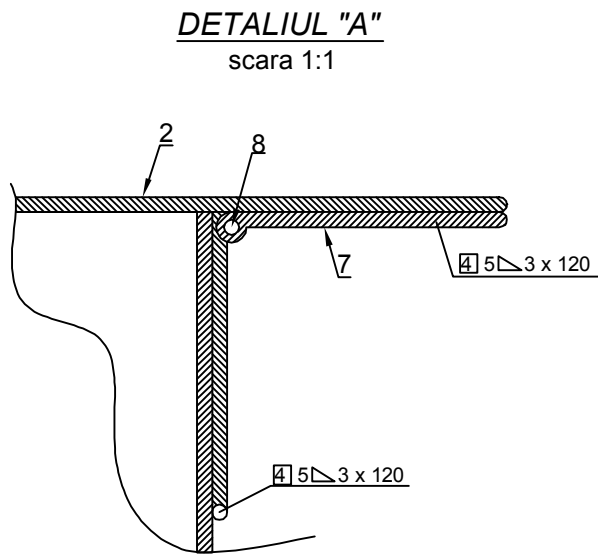
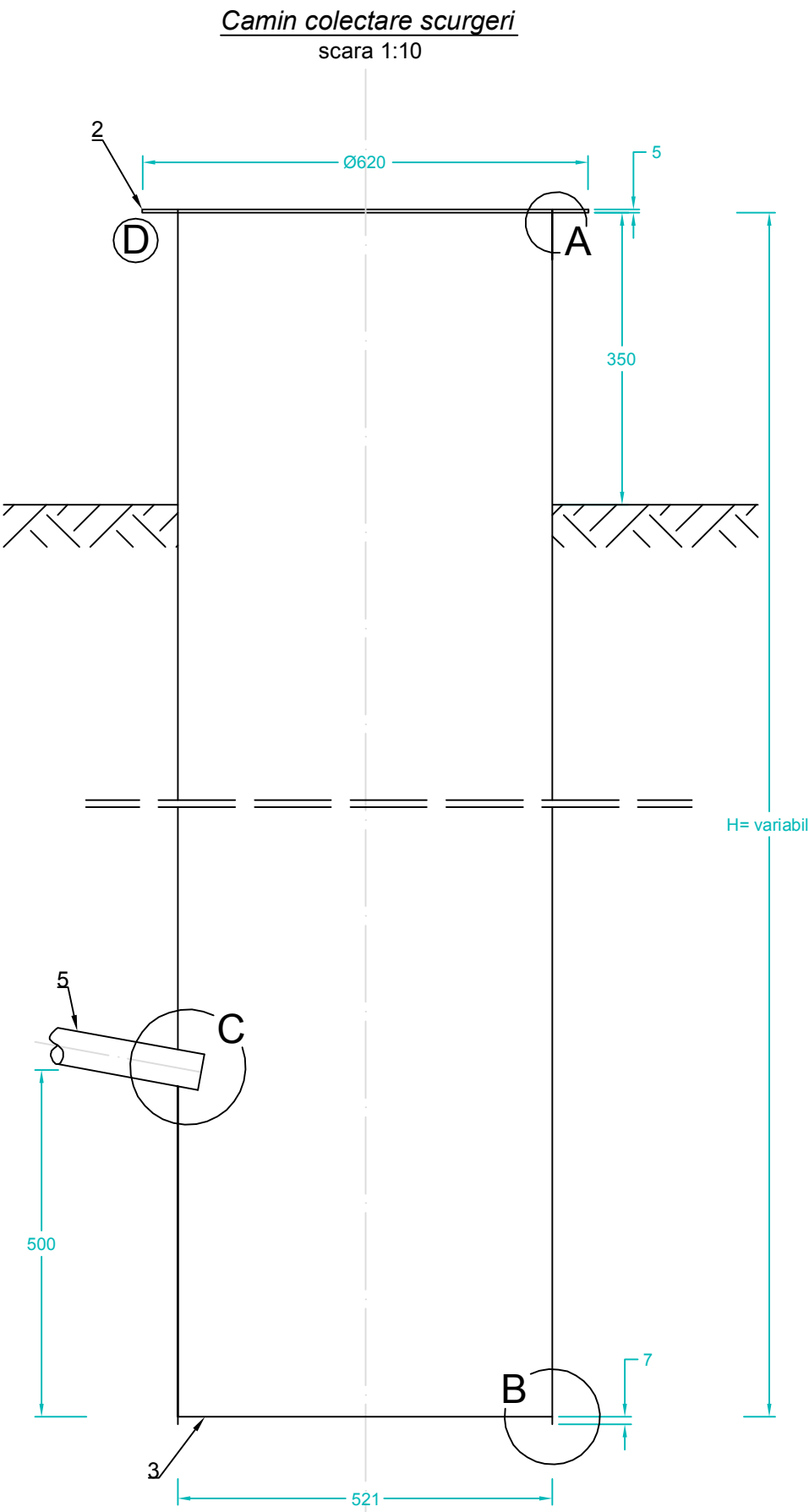
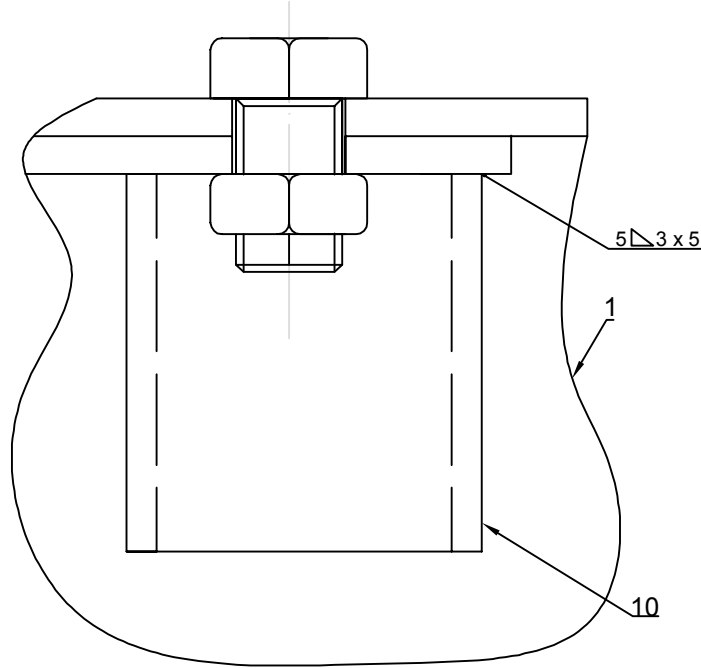
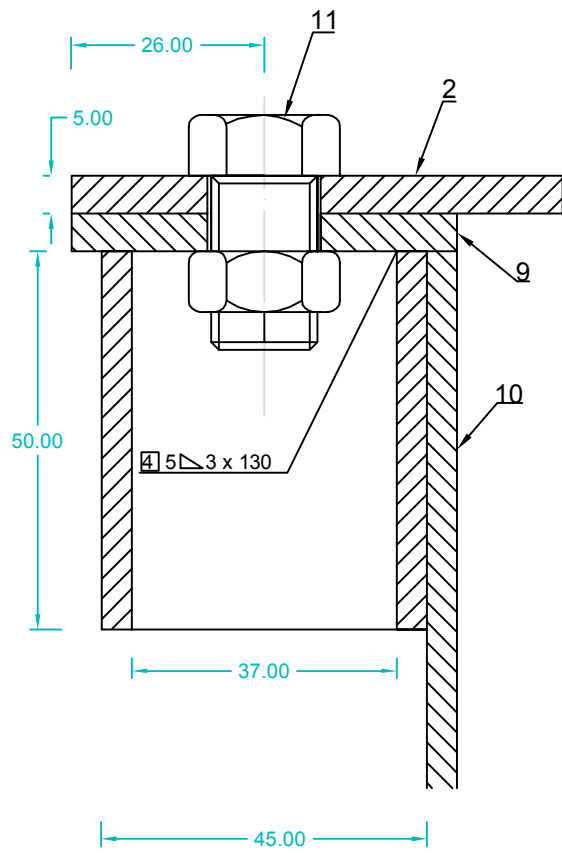


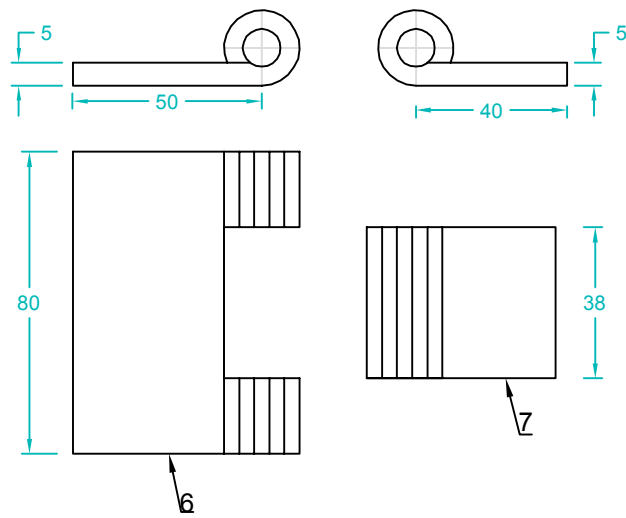
DETALIU CAMIN COLECTARE SCURGERI



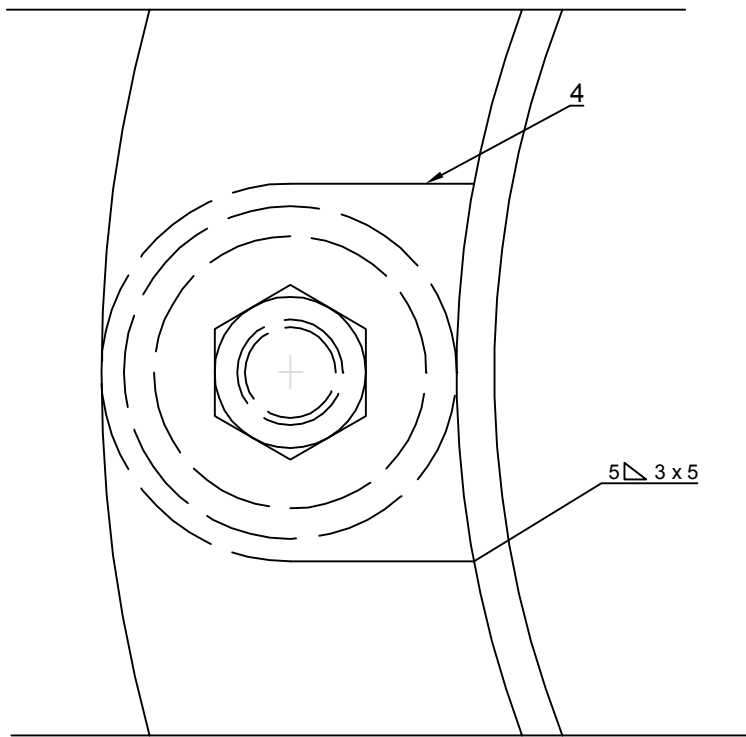
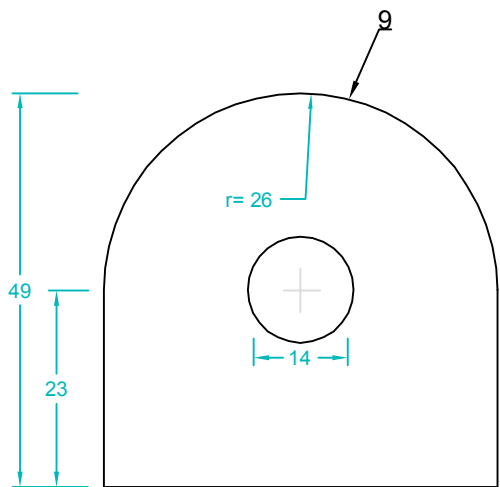
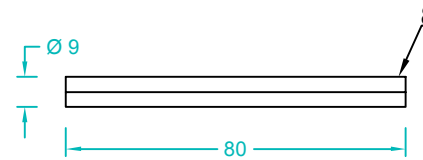
DETALIUL "D"
scara 1:1



DETALII BALAMA
scara 1:2



BOLT BALAMA
scara 1:1



Poz.	DENUMIRE	STAS	BUC.	MATERIAL	OBSERVATII
1	MANTA CAMIN	SR EN ISO 3183:2013	1	L 245N	Ø521 x 7.14 x h SR 6898-1:95
2	CAPAC CAMIN		1	OL 37.2K	Tb 620 x 620 x 2mm SR EN 10029:2011
3	FUND CAMIN		1	OL 37.2K	Tb 521 x 521 x 7mm SR EN 10029:2011
4	INVELIS BITUM	STAS 2484:85	1		521 x 521mm
5	CONDUCTA DE SCURGERE	SR EN ISO 3183:2013	1	L 245N	Ø 60.3 x 3.6mm
6	BALAMA		1	OL 37.2K	Tb 80 x 8 x 6mm SR EN 10029:2011
7	CONTRA BALAMA		1	OL 37.2K	Tb 40 x 70 x 5mm SR EN 10029:2011
8	BOLT BALAMA		1	OLC 45	Ø10 x 100mm SR EN 10060:2004
9	SUPORT INCHIDERE		1	OL 37.2K	Tb 50 x 5 x 5mm SR EN 10029:2011
10	PROTECTOR INCHIDERE	SR 6898-1:95	1	L 245N	Ø45 x 4 x 50 521 x 521
11	SURUB M12 x 35	SR EN ISO 4018:2011	1	OLC 35 SREN10083-2:2007	
12	PIULITA M12	SR EN ISO 4034:2013	1	OLC 25	

Denumire / h (m) camin	h= 2.50m	h= 3.00m	h= 3.50m	h= 4.00m	h= 4.50m	h= 5.00m	h= 5.50m	h= 6.00m	h= 6.50m	h= 7.00m
CAPACE CAMIN	37.60	37.60	37.60	37.60	37.60	37.60	37.60	37.60	37.60	37.60
MANTA CAMIN Ø521 x 7,14	220.37	264.45	308.53	352.00	396.68	440.75	484.90	529.05	573.20	617.35
TOTAL Ka	275.98	302.05	346.12	390.20	434.27	478.35	522.50	566.65	610.80	654.95

Verificator/ Expert	Nume	Semnatura	Cerinta	Referat / Expertiza Nr. / Data
S.C. SNIF PROIECT S.A. Targoviste Numar de inmatriculare J15/925/2005				Beneficiar: S.C. CONPET S.A. PLOIESTI
Specificatie	Nume	Semnatura	Scara: 1:10 1:2 1:1	Pr. nr. 330 / 2011
Sef proiect	Ing. Costea Paul			"Inlocuire conducte de titer Ø10 3/4" F1 si F2 Siliste - Ploiesti, in zona subtraversare DN 71 Baldana - Targoviste - Sinaia, localitatea Cazaci, jud. Dambovit pe o lungime de cca 360m pe fiecare fir"
Desenat	Ing. Radu Florin		Data: 2016	
Proiectat	Ing. Costea Paul			Detaliu camin colectare scursori
				Pl. nr. 27